



SPECIFICATION SHEET NO.	S0317 - SDR433M920S012	
ORIGINAL MFG/PART NO.	TGS Crystals/SDR 433.92MA TLF/R433.92S12	
NEXTGEN PART CODE	SDR433M920S012	Indicate This Code For RFQ /Order
DATE	Mar. 17, 2025	
REVISION	A2	Updated With Most Recent Data
DESCRIPTION AND MAIN PARBMETRICS	<p>SMD SAW Resonator, 6 Pads, 3030 Type, SDR Series</p> <p>Dimension L3.0*W3.0*H1.25mm</p> <p>Center Frequency 433.920MHz; Frequency Tolerance ± 75KHz</p> <p>Insertion Loss: 1.7dB Typical, 2.0dB Max.</p> <p>Operating Temp. Range -40°C ~ +85°C</p> <p>Reflow Profile Condition 260°C Max.</p> <p>Package in Tape/Reel, 3000pcs/Reel</p> <p>REACH/RoHS/RoHS III Compliant</p>	
CUSTOMER		
CUSTOMER PART NUMBER		
CROSS REF. PART NUMBER		
MEMO		

VENDOR APPROVE
<div>Issued/Checked/Approved</div> <div>    </div>
Effective Date: Mar. 17, 2025

CUSTOMER APPROVE
<div></div> <div></div> <div></div>
Date:

MAIN FEATURE

- SMD SAW Resonator 3030 Type 6 Pads
- Dimension L3.0*W3.0*H1.25mm
- Low-loss SAW Resonator
- One Port SAW Resonator
- Ceramic Package For Surface Mounted Technology (SMT)
- Electrostatic Sensitive Device (ESD)
- Moisture Sensitivity Level (MSL) 1
- Short Lead time
- Cross Competitors Parts and More
- REACH/RoHS/RoHS III Compliant



Image shown is a representation only. Exact specifications should be obtained from the product dimension.



APPLICATION

- Bluetooth, Wireless Communication Set
- Communication Electronics

ELECTRICAL CHARBCTERISTICS

- See Page 5
- All Products Parameters are Subject To NextGen Components' Final Confirmation.

HOW TO ORDER

- Please Follow Up Part Code Guide And Indicate NextGen Part Code SDR433M920S012 For RFQ and Order.

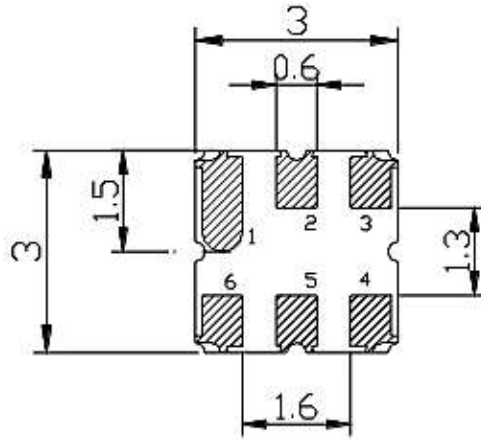
PART CODE GUIDE

RFQ
[Request For Quotation](#)

CODE	NAME	KEY SPECIFICATION OPTION
SDR	Series Code	SMD SAW Resonator, 6 Pads, 3030 Type Dimension L3.0*W3.0*H1.25mm
433M92	Frequency Range Code	433M92: 433.920MHz
0S012	Internal Control Code	Letter A~Z, a~z or Digits (1-9)
XX	Special/Custom Parameters Code	Blank: N/A XX: Letter A~Z, a~z or Digits (0~9) for Special/Custom Parameters

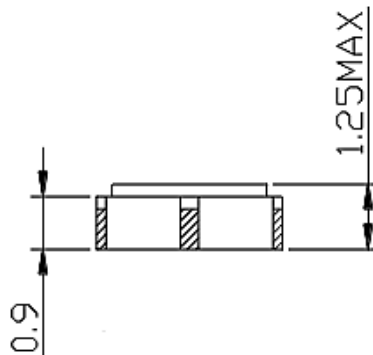
DIMENSION - Unit: mm, L3.0*W3.0*H1.25mm

Bottom View



PIN	CONFIGURATION
2	Input/Output
5	Output/Input
1, 3, 4, 6	Case Ground

Side View



MAX. RATING & CHARACTERISTICS - At 25±2°C Ambient Temperature Unless Otherwise Specified.

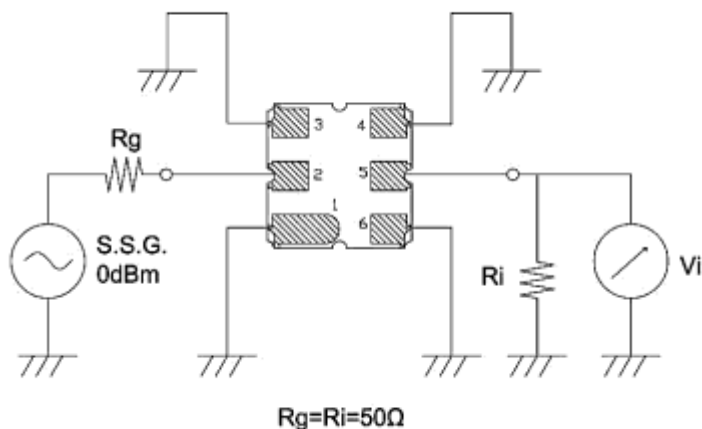
PARAMETER	SYMBOLS	VALUE	UNITS
RF Power Level	P	10	dBm
DC Voltage	V _{bc}	±30	V
Operating Temperature Range	T _A	-40 to +85	°C
Storage Temperature Range	T _{stg}	-55 to +125	°C

ELECTRONICAL CHARACTERISTICS

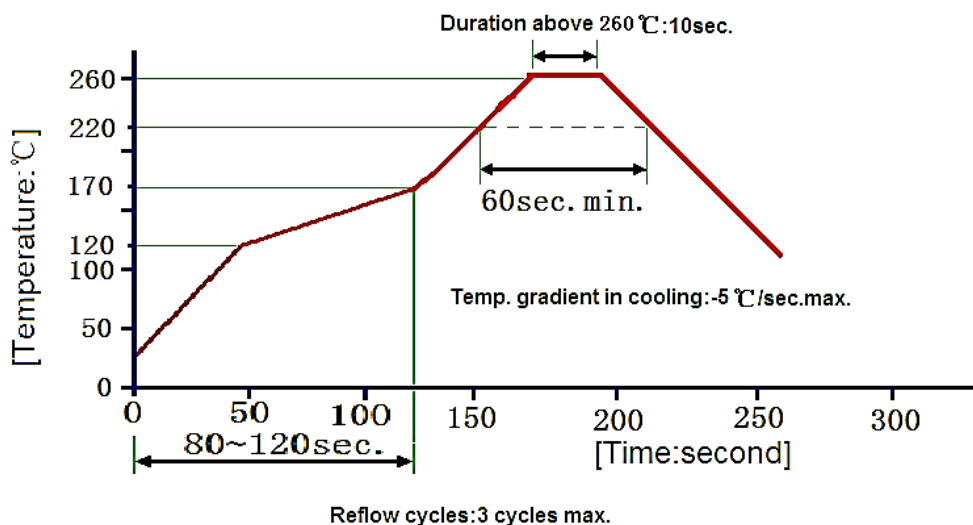
1) Test Temperature: 25°C±2°C 2) Terminating source impedance: 50Ω 3) Terminating load impedance: 50Ω .

PARAMETER		SYMBOLS	CHARACTERISTICS			
			MIN.	TYPICAL	MAX.	UNIT
Center Frequency- Absolute Frequency		F _C	-	433.920	-	MHz
Frequency Tolerance from 433.92MHz		Δf _c	-	± 75	-	KHz
Insertion Loss		IL	-	1.7	2.0	dB
Quality	Unloaded Q	Q _U	-	12366	-	
Factor	50Ω Loaded Q	Q _L	-	1642	-	
Temperature	Turnover Temperature	T ₀	25	40	55	°C
Stability	Frequency Temp. Coefficient	FTC	-	0.032	-	ppm/°C
Frequency Aging	Absolute Value during the 1 st Year	f _A	-	≤10	-	ppm/yr
DC Insulation Resistance between Any Two Pins			1.0	-	-	MΩ
RF Equivalent RLC Model	Motional Resistance	R _M	-	17	25	Ω
	Motional Inductance	L _M	-	69.5	-	μH
	Motional Capacitance	C _M	-	1.94	-	fF
	Static Capacitance	C ₀	2.0	2.3	2.6	pF

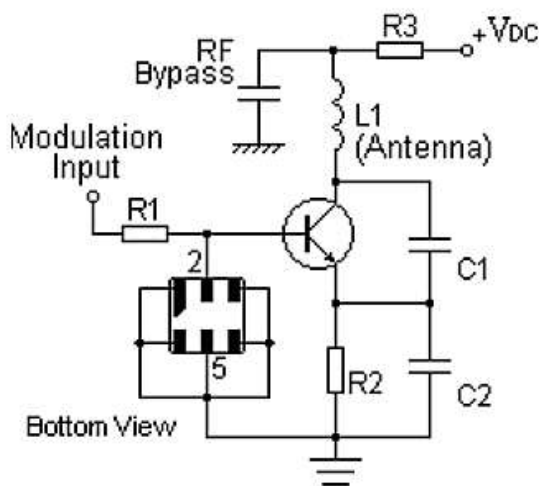
MEASUREMENT CIRCUIT – FOR REFERENCE ONLY



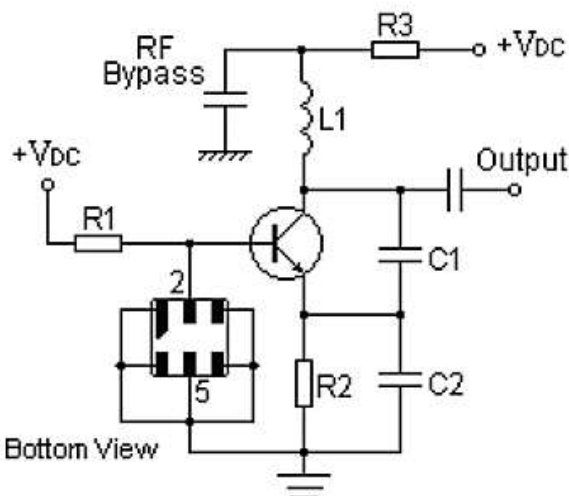
RECOMMENDED SOLDERING PROFILE – FOR REFERENCE ONLY



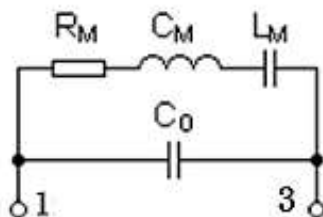
TYPICAL LOW-POWER TRANSMITTER APPLICATION – FOE REFERENCE ONLY



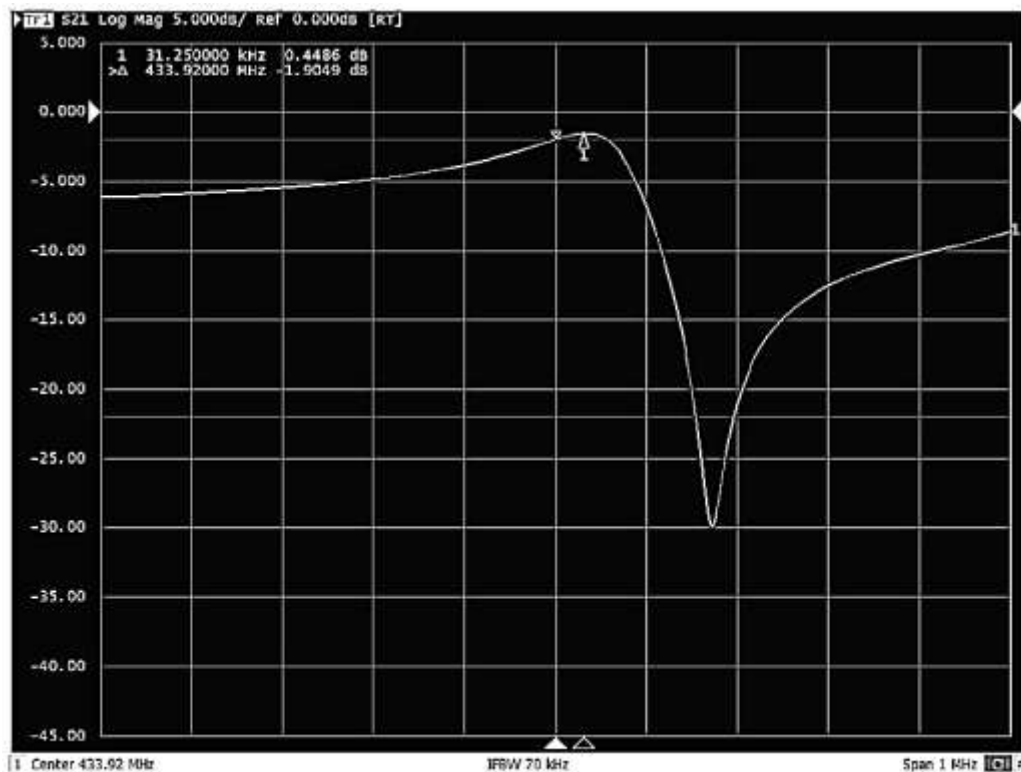
TYPICAL LOCAL OSCILLATOR APPLICATION – FOE REFERENCE ONLY



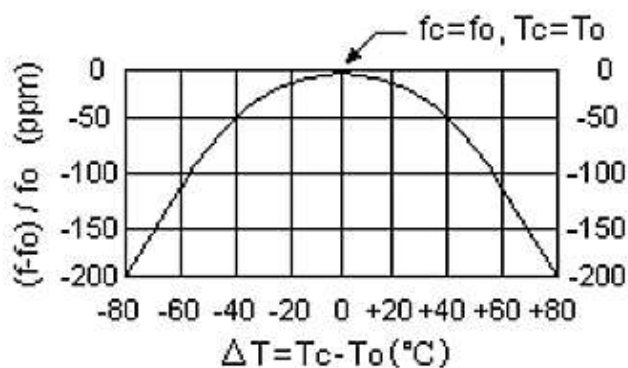
EQUIVALENT LC MODEL – FOR REFERENCE ONLY



FREQUENCY RESPONSE – FOR REFERENCE ONLY



TEMPERATURE CHARACTERISTICS – FOR REFERENCE ONLY



- Note: The curve shown above accounts for resonator contribution only and does not include LC component temperature contributions.

RELIABILITY CHARACTERISTICS

TEST ITEMS	TEST METHOD AND CONDITIONS
Temperature Storage	<ul style="list-style-type: none"> Temperature: $85^{\circ}\text{C} \pm 2^{\circ}\text{C}$, Duration: 250h , Recovery time: $2\text{h} \pm 0.5\text{h}$ Temperature: $-40^{\circ}\text{C} \pm 3^{\circ}\text{C}$, Duration: 250h ,Recovery time: $2\text{h} \pm 0.5\text{h}$
Humidity Test	<ul style="list-style-type: none"> Conditions: $60^{\circ}\text{C} \pm 2^{\circ}\text{C}$, 90~95% RH, Duration: 250h
Thermal Shock	<ul style="list-style-type: none"> Heat cycle conditions: $\text{TA} = -40^{\circ}\text{C} \pm 3^{\circ}\text{C}$, $\text{TB} = 85^{\circ}\text{C} \pm 2^{\circ}\text{C}$, $t_1 = t_2 = 30\text{min}$, Switch time: $\leq 3\text{min}$, Cycle time: 100 times, Recovery time: $2\text{h} \pm 0.5\text{h}$.
Vibration Fatigue	<ul style="list-style-type: none"> Frequency of vibration: 10~55Hz, Amplitude:1.5mm Directions: X,Y and Z, Duration: 2h
Drop Test	<ul style="list-style-type: none"> Cycle time: 10 times, Height: 1.0m
Solderability	<ul style="list-style-type: none"> Temperature: $245^{\circ}\text{C} \pm 5^{\circ}\text{C}$, Duration: 3.0s--5.0s, Depth: DIP--2/3 , SMD--1/5
Resistance to Soldering Heat	<ul style="list-style-type: none"> Thickness of PCB:1mm , Solder condition: $260^{\circ}\text{C} \pm 5^{\circ}\text{C}$, Duration: $10 \pm 1\text{s}$ Temperature of Soldering Iron: $350^{\circ}\text{C} \pm 10^{\circ}\text{C}$, Duration: 3~4s , Recovery time : $2 \pm 0.5\text{h}$
Remarks	<ul style="list-style-type: none"> As a result of the particularity of inner structure of SAW products, it easy to be breakdown by electrostatic, so we should pay attention to ESD protect in the test. Static voltage between signal load and ground may cause deterioration and destruction of the component. Please avoid static voltage. Ultrasonic cleaning may cause deterioration and destruction of the component. Please avoid ultrasonic cleaning. Only leads of component may be soldered. Please avoid soldering another part of component. There is a close relationship between the device's performance and matching network. The specifications of this device are based on the test circuit shown above. L and C values may change depending on board layout. Values shown are intended as a guide only.

Technical drawing of a mechanical part, likely a bracket or support, showing dimensions and tolerances. The drawing includes a top view and a side view.

Top View Dimensions:

- Overall width: $12.00^{+0.10}_{-0.10}$
- Overall height: $5.50^{+0.05}_{-0.05}$
- Distance from left edge to first hole center: $2.00^{+0.10}_{-0.10}$
- Distance between hole centers: $1.50^{+0.10}_{-0.00}$
- Distance from last hole center to right edge: $4.00^{+0.10}_{-0.10}$
- Distance from left edge to first square feature center: $2.00^{+0.10}_{-0.10}$
- Distance between square feature centers: $1.50^{+0.10}_{-0.00}$
- Distance from last square feature center to right edge: $4.00^{+0.10}_{-0.10}$
- Distance from top edge to hole center line: $1.75^{+0.10}_{-0.10}$
- Distance from top edge to square feature center line: $5.50^{+0.05}_{-0.05}$
- Distance from hole center line to square feature center line: $4.00^{+0.10}_{-0.10}$

Side View Dimensions:

- Overall height: $16.00^{+0.05}_{-0.05}$
- Distance from bottom edge to first step: $3.20^{+0.05}_{-0.05}$
- Distance from first step to second step: $0.30^{+0.05}_{-0.05}$
- Distance from second step to top edge: $0.30^{+0.05}_{-0.05}$

The diagram illustrates the structure of a magnetic tape. It is divided into sections labeled: 'vacant', 'components contained', 'vacant', and 'Leader part'. The 'components contained' section is further divided into 'vacant' and 'components contained' sub-sections. Dimensions are indicated: 150mm min for the first 'vacant' section, 150mm min for the second 'vacant' section, and 250mm min for the 'Leader part'. An arrow at the bottom indicates the 'TAPE RUNNING DIRECTION'.

IMPORTANT NOTES AND DISCLAIMER

1. **ROHS COMPLIANCE:** The levels of RoHS restricted materials in this product are below the maximum concentration values (also referred to as the threshold limits) permitted for such substances, or are used in an exempted application, in accordance with EU RoHS Directive (EU) 2015/863 EC (RoHS3). RoHS Test Report for this product can be obtained at Download Center.
2. **REACH COMPLIANCE:** REACH substances of high concern (SVHCs) information is available for this product. Since the European Chemical Agency (ECHA) has published notice of their intent to frequently revise the SVHC listing for the foreseeable future, REACH Test Report for this product can be obtained at Download Center.
3. All Product parametric performance is indicated in the Electrical Characteristics for the listed herein test conditions, unless otherwise noted. Product performance may not be indicated by the Electrical Characteristics if operated under different conditions.
4. NextGen Component, Inc (*NextGen*) reserves the right to make changes to this document and its products and specifications at any time without notice. Customers should obtain and confirm the latest product information and specifications before final design, purchase or use.
5. *NextGen* makes no warranty, representation or guarantee regarding the suitability of its products for any particular purpose, nor does *NextGen* assume any liability for application assistance or customer product design.
6. *NextGen* does not warrant or accept any liability with products which are purchased or used for any unintended or unauthorized application. No license is granted by implication or otherwise under any intellectual property rights of NextGen.
7. *NextGen* products are not authorized for use as critical components in life support devices or systems without express written approval by *NextGen*.
8. *NextGen* requires that customers first obtain an RMA (Returned Merchandise Authorization) number prior to returning any products. Returns must be made within 30 days of the date of invoice, be in the original packaging, unused and like-new condition. At the time of quoting or purchasing, a product may say that it is Non-Cancelable/ Non-Returnable (NCNR). These products are not returnable and not refundable.